

# WallNet™



## Network monitoring digital displays

Clarity WallNet™ is an easy-to-use hardware and software solution designed to monitor the performance of Clarity digital displays over a network. It is ideal for mission-critical digital wall applications requiring the highest availability and performance. WallNet™ also allows operators of digital signage or public venue advertising networks to monitor the display status on their network.

### Features

Networked access to display walls

On-demand and automatic monitoring

Email alert system

Custom commands

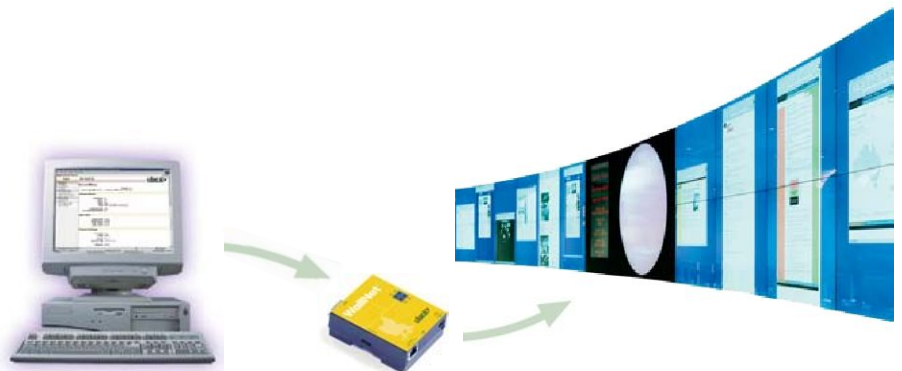
Web-based interface DHCP or static network configuration

### Maximizes display uptime

WallNet™ allows operators to view the real-time status of Clarity digital displays using a standard web browser. It monitors lamp and backlight hours, fan failure, temperature threshold, RS-232 communications and other variables – and can automatically send emails alerts if a problem is detected.

### Easy to use and update

A single WallNet™ module can monitor the status of up to 48 digital displays connected by RS-232 loop-thru cabling. The web-based interface makes configuration simple and gives users easy access to the multiple display status views, display control features and WallNet™ administration tools. Plus, software updates are available with a click of the mouse.



A single, easy to use connection gives users access anywhere on the network.

## Hardware

The external hardware module includes a power supply and provides a serial-to-ethernet bridge on the network.

## Software

The WallNet™ graphical user interface uses standard web technologies allowing users to view and share information about each display in a digital wall. Version 1.1 gives users access to:

### Custom commands

Programmable command buttons enable custom operations to simplify running your display wall.

### Status views

Monitor the status of each display in the digital wall including input source, system hours, lamp hours, and picture settings. Send any status view as an email.

### Reports and alerts

Schedule regular status emails and configure automatic display wall health monitoring with alerts.

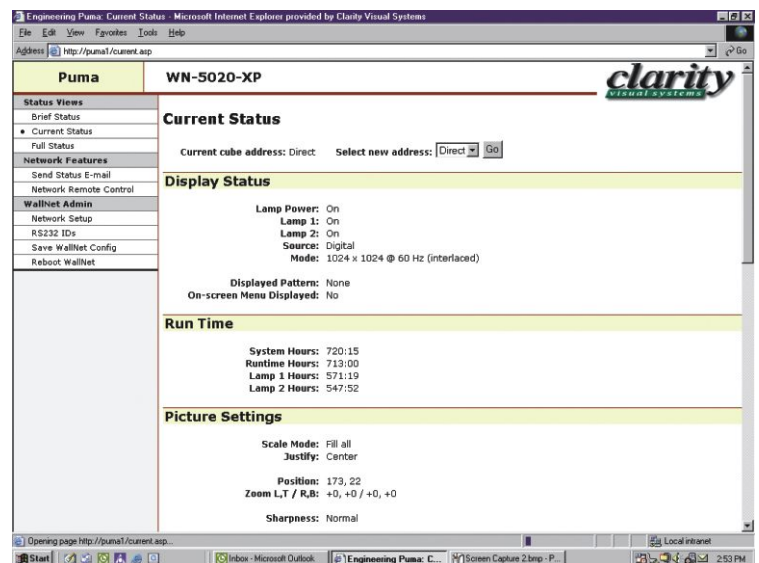
### Display control

Interactive and scheduled power on/off, network remote control to change display settings, program and test custom commands, and set up RS-232 communications.

### WallNet administration

Set up and manage network options, three levels of access control, and upgrade WallNet™ Software.

### The web-based WallNet™ user interface is easy to use



Specifications	
Power supply	External 100-240 VAC 50/60 Hz input, 5 VDC output
Power consumption	120 VAC5 watts max 220 VAC6 watts max
Operating temperature	10 - 50° C
Relative humidity	5 - 90% non-condensing
Dimensions	71mm x 86mm x 30mm (2.8" x 3.4" x 1.2")
Weight	130gr (0.3lbs)
Certification	FCC Part 15, A EN55022, A CE Mark



**Exclusively imported by:**  
**Novia AG**, Communication Platforms  
CH-8153 Rümlang, Tel.: +41 1 817 70 30, Fax: +41 1 817 70 31  
**Novia SA**, Communication Platforms  
CH-1907 Saxon, Tel.: +41 27 744 42 30, Fax: +41 27 744 42 31  
info@novia.ch, www.novia-systems.com